

RTU-9000: Operator Terminal

The RTU-9000 Operator Terminal Unit is an expanded operator interface MMI for the LCM-9000 Data Collection Module. The RTU collects, stores, and processes shot data information from the LCM-9000. The RTU-9000 allows the operator to view the collected shot data in both graphic and text forms. Graphical shot profiles can be viewed by themselves, or overlaid onto a stored master profile for comparison. Using the SPC software, the operator can prepare and print Statistical Process Control reports, charts, and graphs for easy analysis. Multiple setups can be stored at the RTU-9000 and downloaded to the LCM-9000 for quick and easy job start-ups. A single RTU-9000 can be shared between as many as 32 LCM-9000s and connected to the LCMs only when needed.

Shot Profile Software

The Shot Profile Software provides the ability to view, manipulate, and print both position and hybrid shot profiles. The profiles can be either the current shot data file, an archived data file, or one of 100 automatically stored Exception Profiles. This software allows the user to analyze velocity, pressure, temperature, and the tie bar strain of a single shot or two shots graphically overlaid on each other. Shot profile information is easily stored for future reference. A special feature of this group allows the user to configure the RTU-9000 to continuously display each shot profile as it is received.

Shot Status Software

The Shot Status Software covers the operations that show the user the current status of the particular machine. The graphical display of shot status, present on all the menus, is part of this group.

Productivity & Quality Software

The Database Software is used to input job, operator identification, machine names and status, scrap codes, and user-specified tolerances for monitored and/or controlled DCMs. The tolerances are used to display the status of each shot as it occurs. This software group also includes the capability to download a setup, from the RTU-9000, to LCM-9000 or to upload and store a setup from the LCM-9000 to the RTU-9000.



Charts & Reports Software

The Charts & Report Software provides analysis and display of the shot data collected from the DCMs. The display can be either on-screen or as a hardcopy printout. In most cases, the user selects either a numerical (table) or graphical format of the data. SPC reports include: X-Bar & R Charts, Scatter Diagrams, Run Charts, Distribution Graphs, and HiLo Range Charts.

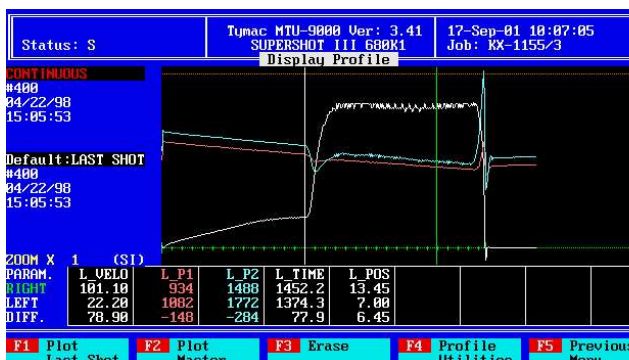
Tymac Controls Corp

127 Main St. Franklin, NJ 07416 Phone: (973)827-4050 Fax: (973)827-9247 us@tymac.com
US Patents: 3,911,419, 3,878,375, 4,094,490, 4,249,186 4,383,449, 4,504,920, 4,734,869 Canadian Patent: 1-234-902 European Patent: 0 126 174

RTU-9000: Operator Terminal

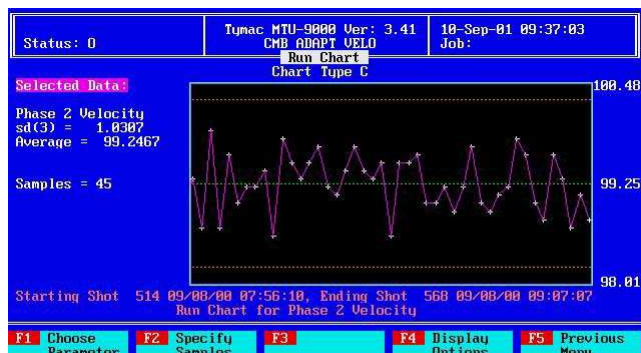
Software for RTU-9000

- Menu-Driven User Interface
- Continuous DC Machine Status Display
- SPC Reports
- Metal Injection Setup for Hot & Cold Chamber - Engineering software provides optimum setups for any job
- Continuous Data Collection
- Position & Hybrid Graphic Plotting
- Hard Copy Reports and Shot Profiles
- Downloading of Machine Setups
- Export Data for Use With Other Computers and Applications
- Alarm / Report Editor
- Exception Plotting



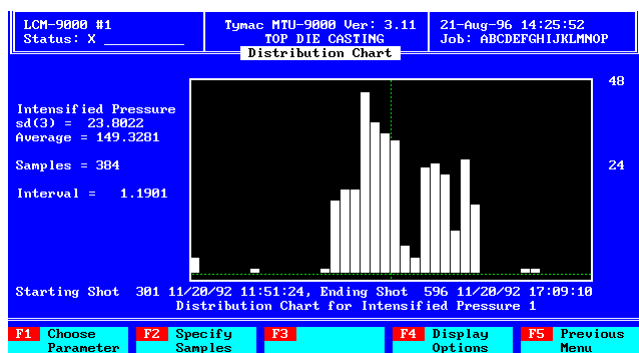
Reports

- Data Log Report
- Shot Summary Report
- SPC Summary Report
- Productivity & Quality Control Reports



Graphs & Charts

- Shot Profile
- X-Bar & R Chart
- Run Chart
- Scatter Diagram
- Distribution Chart
- HiLo Range Chart



Standard Features

- Industrial Grade PC-Compatible Processor
- 10 Gb or larger Hard Disk Drive
- 1.44-M/B (3.5-in.) Floppy Disk Drive
- High Resolution Active Color LCD
- 'Softkey' Keypads
- Rated for continuous duty without heat exchangers or air conditioners

Tymac Controls Corp

127 Main St. Franklin, NJ 07416 Phone: (973)827-4050 Fax: (973)827-9247 us@tymac.com

US Patents: 3,911,419, 3,878,375, 4,094,490, 4,249,186 4,383,449, 4,504,920, 4,734,869 Canadian Patent: 1-234-902 European Patent: 0 126 174